

20ZBY

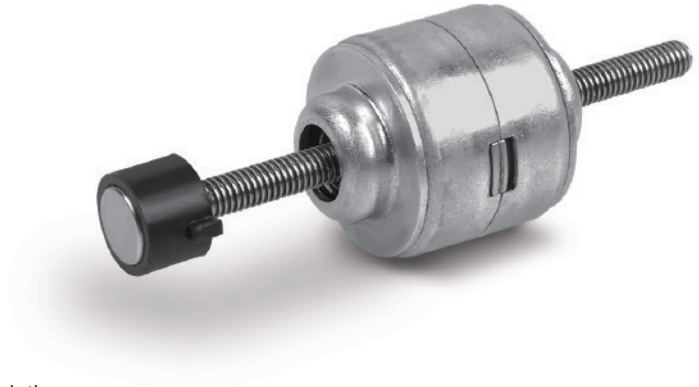
PM LINEAR STEPPER MOTOR

PM直线步进电动机



Insulation Resistance: DC500V 50MΩ
 Operating Temperature: -20°C ~ 50°C
 Insulation Class: E

绝缘电阻: DC500V 50MΩ
 环境温度: -20°C ~ 50°C
 绝缘等级: E



Due to the precision screw phase turns with self lubricating and high temperature resistant nut materials along with high performance magnetic materials the linear stepper motor has greater thrust, lower noise, more accurate linear motion distance and longer life.

采用高性能磁性材料、精密丝杆和自润滑耐高温螺母材料相匹配，使电机发挥更大推力，更低噪音、更精密的直线运动距离和更长寿命，在同类产品中占领先地位，可替代进口产品。

技术参数 Specifications

Model	Voltage (V)	Phases	Step Angle (°)	Thrust (N)	Current (A)	Res (Ω)	Route (mm)	Lead (mm)	Weight (g)
型号	电压	相数	步距角	推力	相电流	相电阻	行程	导程	重量
20ZBY-01061	5	2相	15	10	0.66	7.5	51	0.61	30
20ZBY-02061	5	2相	15	6	0.66	7.5	51	2*0.61	30

*以上仅为代表性产品，可根据客户要求制作

外型尺寸 Dimensions

