

110.130SJY

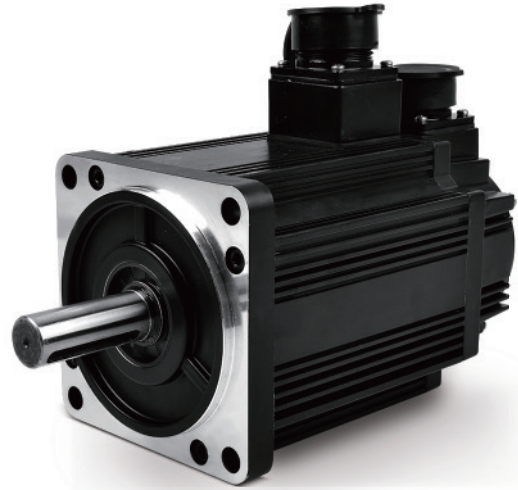
AC PERMANENT MAGNET SYNCHRONOUS SERVO MOTOR

交流永磁伺服电动机

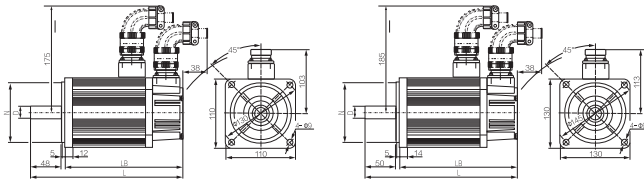


Operating Temperature: -10°C ~ 40°C
 Air Relative Humidity: Less Than 90% (Condensation Free)
 AC Steady-state Voltage Value: (0.85 ~ 1.1) X Rated Voltage Value
 Pole Pairs: 4
 Insulation Class: B
 Protection Class: IP65
 Encoder Line Number: 2500 p/r

环境温度: -10°C ~ 40°C
 空气相对湿度: ≤90% (无凝露)
 AC稳态电压值: (0.85 ~ 1.1) X 额定电压值
 极对数: 4
 绝缘等级: B
 防护等级: IP65
 编码器线数: 2500 p/r



外型尺寸 Dimensions



110 SYJ

130 SJY

技术参数 Specifications

Model	D(mm)	N(mm)	LB(mm)	L(mm)
型号				
110SJY-M04025	Φ19 ^{-0.013}	Φ95 ^{-0.035}	186(237)	241(292)
110SJY-M04030	Φ19 ^{-0.013}	Φ95 ^{-0.035}	186(237)	241(292)
110SJY-M06025	Φ19 ^{-0.013}	Φ95 ^{-0.035}	212(263)	267(318)
110SJY-M06030	Φ19 ^{-0.013}	Φ95 ^{-0.035}	212(263)	267(318)
130SJY-M04025	Φ22 ^{-0.013}	Φ110 ^{-0.035}	168(227)	225(284)
130SJY-M05025	Φ22 ^{-0.013}	Φ110 ^{-0.035}	168(227)	225(284)
130SJY-M06025	Φ22 ^{-0.013}	Φ110 ^{-0.035}	176(235)	233(292)
130SJY-M07525	Φ22 ^{-0.013}	Φ110 ^{-0.035}	188(247)	245(304)
130SJY-M10025	Φ22 ^{-0.013}	Φ110 ^{-0.035}	208(267)	265(324)

Model	Rated Power (kW)	Typical Supply Voltage (V)	Rated Current (A)	Rated Torque (N.m)	Peak Torque (N.m)	Rotor Inertia (kg.m ²)	Motor Weight (kg)	Rated Speed (r/min)	Maximum Speed (r/min)
型号	额定功率	驱动单元输入电压	额定电流	额定转矩	最大转矩	转动惯量	电机重量	额定转速	最高转速
110SJY-M04025	1.0	AC三相或单相220	4.5	4	10	0.68X10 ⁻³	6.1	2500	3000
110SJY-M04030	1.2		5	4	10	0.68X10 ⁻³	6.1	3000	3300
110SJY-M06025	1.5		7	6	12	0.95X10 ⁻³	7.9	2500	3000
110SJY-M06030	1.8		8	6	12	0.95X10 ⁻³	7.9	3000	3300
130SJY-M04025	1.0		4	4	10	1.1X10 ⁻³	6.5	2500	3000
130SJY-M05025	1.3		5	5	12.5	1.1X10 ⁻³	6.5	2500	3000
130SJY-M06025	1.5		6	6	18	1.33X10 ⁻³	7.2	2500	3000
130SJY-M07525	1.88		7.5	7.5	20	1.85X10 ⁻³	8.1	2500	3000
130SJY-M10025	2.5		10	10	25	2.42X10 ⁻³	9.6	2500	3000

The 110 and 130 series motor winding is the 4 core connector leads to the corresponding relation table 110、130系列电动机绕组是通过4芯接插件引出对应关系表

Motor Lead	电机引线	U	V	W	机壳接地PE
Socket Number	插座编号	2	3	4	1

Photoelectric encoder is the 15 core connector leads to the corresponding relation table 光电编码器是通过15芯接插件引出对应关系表

Encoder Lead	编码器引线	PE	VCC	GND	A+	A-	B+	B-	Z+	Z-	U+	U-	V+	V-	W+	W-
Socket Number	插座编号	1	2	3	4	7	5	8	6	9	10	13	11	14	12	15

*以上仅为代表性产品, 可根据客户要求制作