

60.80SJY

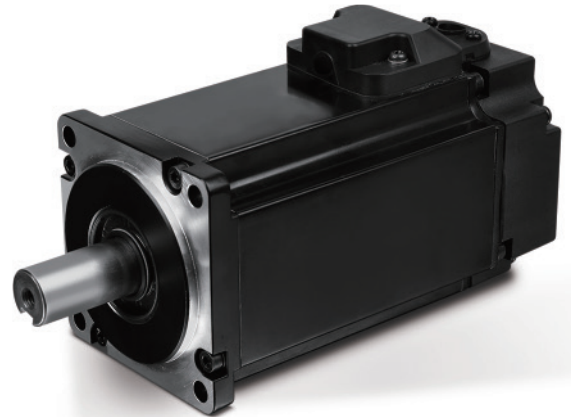
AC PERMANENT MAGNET SYNCHRONOUS SERVO MOTOR

交流永磁同步伺服电动机



Operating Temperature: -10°C ~ 40°C
 Air Relative Humidity: Less Than 90% (Condensation Free)
 AC Steady-state Voltage Value: (0.85 ~ 1.1) X Rated Voltage Value
 Pole Pairs: 4
 Insulation Class: B
 Protection Class: IP65
 Encoder Line Number: 2500 p/r

环境温度: -10°C ~ 40°C
 空气相对湿度: ≤90% (无凝露)
 AC稳态电压值: (0.85 ~ 1.1) X 额定电压值
 极对数: 4
 绝缘等级: B
 防护等级: IP65
 编码器线数: 2500 p/r



技术参数 Specifications

Model	D(mm)	N(mm)	LB(mm)	L(mm)
型号				
60SJY-M00630	Φ14 ^{-0.013}	50	102	132
60SJY-M01330	Φ14 ^{-0.013}	50	132	162
60SJY-M01930	Φ14 ^{-0.013}	50	152	182
80SJY-M02420	Φ19 ^{-0.013}	70	120	175
80SJY-M02430	Φ19 ^{-0.013}	70	145	180
80SJY-M03220	Φ19 ^{-0.013}	70	168	203
80SJY-M03230	Φ19 ^{-0.013}	70	80	215

安装注意事项 Installation Precaution

- Never hit the servo motor or shaft, especially when coupling or disassembly the servo motor to machine, the encoder may become faulty
- Striving to make the best of its shaft to prevent vibration and bearing damage
- The motor and amplifier must be connected to be correct and reliable, so as not to damage motor and encoder
- When installing the motor, must ensure that motor shaft and load shaft concentric, so as not to damage the motor and encoder
- 安装或拆卸电机时, 不得敲击电机及转轴, 以免损坏编码器
- 尽量防止轴座的振动, 以免损坏轴承
- 电机与驱动器须正确可靠连接, 以免损坏电机和编码器
- 装配时, 须确保电机轴和负载轴的同心, 以免损坏电机

Model	Rated Power (kW)	Typical Supply Voltage (V)	Rated Current (A)	Rated Torque (N.m)	Peak Torque (N.m)	Rotor Inertia (kg.m ²)	Motor Weight (kg)	Rated Speed (r/min)
型号	额定功率	驱动单元输入电压	额定电流	额定转矩	最大转矩	转动惯量	电机重量	额定转速
60SJY-M0063	0.2	AC220	1.4	0.637	1.9	0.17X10 ⁻⁴	1.2	3000
60SJY-M0133	0.4		2.8	1.27	3.8	0.31X10 ⁻⁴	1.4	3000
60SJY-M01930	0.6		3.7	1.91	5.7	0.40X10 ⁻⁴	1.8	3000
80SJY-M02420	0.5	AC三相或单相220	3	2.4	7.2	0.83X10 ⁻⁴	2.8	2000
80SJY-M02430	0.75		4.8	2.4	7.2	0.83X10 ⁻⁴	2.9	3000
80SJY-M03220	0.66		5	3.2	9.6	1.23X10 ⁻⁴	3.4	2000
80SJY-M03230	1.0		6.2	3.2	9.6	1.23X10 ⁻⁴	3.5	3000

*以上仅为代表性产品, 可根据客户要求制作

外型尺寸 Dimensions

